

# OPERATOR'S MANUAL

## FAM FRONT MOWER



<b>INDEX</b>				
<b>Section:</b>			<b>Description:</b>	<b>Page No:</b>
	<b>1</b>		Introduction	<b>2</b>
			HSE information sheet	<b>3</b>
	<b>2</b>		In the interest of safety: DO NOT	<b>5</b>
	<b>3</b>		In the interest of safety: DO	<b>5</b>
	<b>4</b>		Instruction & Warning Decals	<b>6</b>
	<b>5</b>		Operating Instructions And Adjustments	<b>7</b>
		5.1	Initial Check	<b>7</b>
		5.2	Attach to ATV	<b>8</b>
		5.3	Mower Cutting Height	<b>9</b>
		5.4	Starting The Engine	<b>9</b>
		5.5	Forward Speed	<b>10</b>
		5.6	Stopping The Mower	<b>10</b>
		5.7	Transport Position	<b>10</b>
		5.8	Sideshift Kit	<b>11</b>
	<b>6</b>		Maintenance Schedule	<b>12</b>
		6.1	Engine	<b>12</b>
		6.2	Excess Crop Build Up	<b>12</b>
		6.3	Visual Check	<b>12</b>
		6.4	Tyre Check	<b>13</b>
		6.5	Rotor Bearing Inspection	<b>13</b>
		6.6	Wheel Bearing Inspection	<b>13</b>
		6.7	Oil Coupling / Bush Wear	<b>13</b>
		6.8	General Inspection	<b>13</b>
		6.9	Rotor Flail Maintenance	<b>13</b>
	<b>7</b>		Parts List	<b>15</b>

With the purchase of your FLAIL MOWER you have made an excellent choice.

This machine should give first class service for a long time, if used correctly, and maintained as described in this manual.

Fitted with an easy to start engine it has been designed to cope with a wide range of conditions. The FAM — Flail mower incorporates easy height adjustment, range of engine options and a full width anti-scalping roller to avoid damage to machine and sward.

The mower is constructed from 4mm steel for added strength; all fittings are of high quality to ensure years of trouble free use.

Different wheel options are available for the FAM Flail Mower

Engines used may vary, but all are accompanied by the maker's usual warranty.

# **Selecting and using equipment for all terrain Vehicles(ATVs)**

## **Introduction**

This information sheet gives advice to users on how to use all Terrain vehicles(ATVs) safely with towed and mounted equipment.

Plan the use of an ATV carefully and take particular note of ground conditions and slopes, as these may vary considerably, depending on the terrain, weather conditions, ground surface and the crop under the wheels.

## **Towed equipment**

Choose equipment which matches your ATV. Stability of towed equipment is affected by:

### **Weight ratios**

1. The safe ratio between the trailed laden maximum weight and unladen weight of the ATV must be assessed for each operation.
2. Always take note of information given in the manufacture's handbook when making this assessment.
3. As a guide research shows that on level ground, 4 x unladen weight of the ATV for braked trailed equipment and 2 x unladen weight of the ATV for unbraked trailed equipment are the appropriate maximum ratios.

**Note:** For work on slopes or uneven ground the ratio will need to be reduced.

## **Braking**

### **Fit:**

1. Brakes to trailed equipment. This helps prevent jack-knifing when braking or traveling downhill;
2. Over-run brakes which come into action whenever the ATV brakes are applied;
3. A manually operated parking brake operable from the driving position. This provides control for use when going up slopes.

## **Hitching and loads**

Stability is also improved if:

1. Some weight is transferred from the trailer onto the ATV draw-bar;
2. The load is positioned as near to the centre of the trailer as possible.

## **Tyres and wheels**

1. Check tyres regularly for damage and wear;
2. Select equipment which has tyres and wheels that can cope with speeds over 20mph and occasional higher speeds;



## Maximum towed weight

Follow the advice given by manufacturers on the maximum trailed weight. This will be found on the equipment or in the instruction handbook.

**Note:** Universal road going trailers will normally have the maximum gross weight stated on a separate notice.

## Mounted equipment

ATVs using mounted equipment are safer if the equipment has:

- a low centre of gravity. This improves stability.
- a gross weight within the limits approved by ATV manufacturer.
- no dangerous projections to injure the operator or bystanders;
- no forward projections which stop head protection being worn;
- controls which are easy to work and which do not create a hazard to the operator;

## Instructions for mounted and trailed equipment

Take note of the manufacturer's instructions on:

- operating on slopes;
- where to place loads so as to give fore/aft and lateral stability;
- the risks of using equipment with negative drawbar nose weight, ie loss of traction;
- the maximum operating speed;
- the effect that equipment carried on front and/or rear racks will have on longitudinal and lateral stability;
- securing loads;
- the use of ballast, if any, to improve stability;
- the need to select and use safe routes.

## Using an ATV

- read the manufacturer's instruction book and take note of the safety advice given;
- Choose an ATV with enough power for the work you want it to do. four-wheel driver will give better traction and mobility and may provide a margin of safety;
- Choose a safe route;
- Be aware that increased speed greatly increases the risk of instability and risk of and overturn;

## Training

Train everyone who has to use an ATV whether with mounted or trailed equipment or as a solo machine. The training should emphasise the factors affecting stability, the need for care and concentration, and how to recognise the conditions which may affect the safety of operation. It is important for trainees to familiarize themselves with the handling and control of the machine on level open ground before tackling rough hill terrain.

Suitable training courses are run by bodies such as ATB Landbase and the forestry Authority.

## Helmets

Wear head protection which protects the head and neck. Helmets are suitable. Some users find open faced helmets more suitable than full face helmets.



This symbol means WARNING or CAUTION Personal safety or damage will be at risk if these instructions are ignored. Most accidents are caused by neglect of carelessness; Avoid needless accidents by following the safety precautions listed below.

## **2**

### **IN THE INTEREST OF SAFETY:DO NOT**

1. DO NOT – Operate the mower without all the correct guards fitted.
2. DO NOT – Alter engine settings unless stated by Engine manufacturer.
3. DO NOT – Touch any moving or rotating parts, during working conditions
4. DO NOT – Stop the engine immediately after heavy use, (See section 5.6)
5. DO NOT – Operate the mower without suitable ear and eye protection
6. DO NOT – Allow passengers.
7. DO NOT – Leave machine un-attended while operating
8. DO NOT – Run the engine in an enclosed area, exhaust gases contain Carbon Monoxide and are fatal if inhaled.
9. DO NOT – Operate the mower on excessively steep slopes.
10. DO NOT – Operate the mower unless all safety features are fitted to the mower and are used correctly
11. DO NOT – Operate the mower until you have read and understood the entire operators manual
12. DO NOT – Wear loose fitting clothing, to avoid catching on parts of the machine
13. DO NOT – Try to remove blockages while the engine is running. Ensure engine is stopped and the rotor has finished rotating, before any servicing takes place to your mover.
14. DO NOT – Operate the mower in Dark conditions unless suitable artificial light is used.
15. DO NOT – Operate if excessive vibration occurs, stop the machine immediately and view maintenance chart.
16. DO NOT – Climb on the mower.

## **3**

### **IN THE INTEREST OF SAFETY:DO**

1. DO – Follow Engine manufactures guideline.
2. DO – Ensure all spectators are a safe distance away when operating.
3. DO – Carry out regular servicing and checks before use.
4. DO – Clear cutting area from potential damaging components.
5. DO – Reduce speeds when working on hillsides or rough terrain
6. DO – Be aware components can be hot after operation
7. DO – Follow any towing guidelines stated by ATV manufacturer.
8. DO – Show some caution when filling the tank with petrol, especially if engine components are hot.
9. DO – Ensure all safety decals are in good condition, replace any that are damaged.
10. DO – Keep hands and feet away from rotating blades
11. DO – Ensure mower is in transport position before transporting from workplace.



KEEP WHEEL NUTS TIGHT

CHECK DAILY

REFER TO THE OPERATORS MANUAL

FOR CORRECT TYRE INFLATION PRESSURE

OBSERVE TOWING VEHICLE MAX TOWING LIMITS OR TRAILER MAX WEIGHTS

## **ATTENTION**

Your responsibilities before operating this machine are:

- Read Understand and Follow the safety procedures manual
- Train operators before using & review safety procedures regularly
- Ensure that all guards are in place before operating
- Keep Hand, Feet, Hair and Clothing away from all moving parts
- Avoid wearing loose clothing whenever possible
- Maintain as per schedule in the safety procedures. Especially Blades and Securing Hardware, due to hazard they present should any part break loose during operation
- During maintenance, use suitable support stands
- DO NOT allow any persons to ride on the equipment



The above decals should be located on your FAM – Flail Mower. If any of the above decals are not located on your FAM or are damaged in any way contact for some replacement decals before use.

## 5

## OPERATING INSTRUCTIONS AND ADJUSTMENIS

The FAM FLAIL MOWER is designed to give safe and dependable service if operated according to instructions and intended use.

Read and understand this manual before operating the mower, as failure to do so could result in personal injury or equipment damage.



When used with and A.T.V or compact tractor, ear defenders should be worn. Under normal working conditions a noise level of 83 decibels would be usual, in the case protection is advised.

### 5.1 INITIAL CHECK

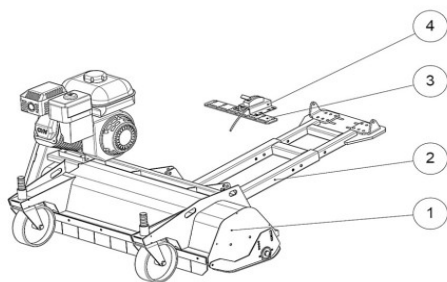
1. Make sure that all nuts, bolts and fittings are securely fixed, and that all packaging materials e.g. wire bands, tape etc have been removed.
2. Check the there is oil in the engine and petrol in the tank.
3. Check tyre.

## 5.2 Attach to ATV

### Ready-to-use package

The flail mower comes in a ready-to-use package.

- 1 flail mower
- 2 adjustable accessory frame
- 3 mounting plate
- 4 remote control



### Attach to ATV

Front Mower is lifted with the ATV's winch.

The flail mower is attached to the ATV with two locking pins, to the centre mounting kit, like the snow plate. (centre mounting kit, behind the front axle underneath the ATV)



### 5.3 MOWER CUTTING HEIGHT

Cutting height adjustment: 2-7 cm with the front wheels and the adapting piece.  
Even higher with a winch.

#### CUTTING HEIGHT ADJUSTMENT:

Adjusting the pin of wheels or adapting piece to raise or lower as necessary.



### 5.4 STARTING THE ENGINE

#### READ AND UNDERSTAND THE ENGINE OPERATORS MANUAL BEFORE USE



Observe all safety precautions; keep hands and feet away from rotor and other moving parts. Keep spectators at a safe distance.

1. Make sure there is a gap between the blades and the ground / crop
2. Select an area clear of loose debris that could be picked up.
3. Set the engine choke, and suitable idling speed with the throttle.
4. Place one foot on top of the deck body to give a firm and balanced position. Pull the starter cord firmly, allowing the cord to return to the housing slowly (one or two strong pulls should start the engine).
5. After a few seconds warming up at idling speed, move the throttle to the factory pre-set working position to give a normal/working engine R.P.M of 3600 max.



#### NOTE

If the throttle is altered to increase the engine R.P.M beyond the recommended level, the guarantee may become invalid. In addition to this, cutting efficiency will be reduced, fuel consumption will increase and excessive vibration could be caused, resulting in a potential danger to personnel and damage to components.

#### ELECTRIC START

Push button electric start engine options can be supplied if required. Simply hitch up the mower, connect the electrical supply plug to the ATV socket and turn the ignition key to start the mover. Observing all the precautions mentioned above in 'Starting the mower'.

#### REMOTE THROTTLE CONTROL

When a remote throttle control option is fitted, normally to the rear carrier frame of an ATV or other suitable site on the towing vehicle, it gives the operator the facility of controlling the

mower engine from the operating position.

The facility is most beneficial when moving from one cutting site to another close to it, by reducing the engine revs to allow the mower flails to come to rest, no harm will be caused to the mower or ground surface during transport, often over rough or difficult terrain when stones and loose objects may be encountered.

## 5.5 FORWARD SPEED

The amount of grass or weeds to be cut dictates the forward speed; slow forward speeds give better results in most cases. Ensure you follow the procedure below.

Start off in the slowest speed possible, ensure the mower is working efficiently with the engine set at maximum RPM and not labouring. (If this is not possible due to very heavy cutting conditions, raise cutting height of blades and be prepared to go over twice with machine set lower on 2nd pass, leave at least 24 hours in between 1st and 2nd cut to allow grass to dry out)

Increase forward speed until the RPM of the engine starts to slow down (This is working the engine too hard for conditions) – slow down, let the engine regain full RPM and go through the same process but stop short of speed which made engine labour previously. It is important always to listen to note of engine to ensure engine and mower are working efficiently, slow down or stop once engine starts to labour.

**FAILURE TO DO THIS WILL RESULT IN CLUTCH SLIP AND ULTIMATELY SEVERE DAMAGE TO THE CLUTCH AND DRIVE BELTS.**



When moving from normal working conditions to heavier cutting, it may be evident that the engine dies down and loses revs. SLOW DOWN IMMEDIATELY to allow the engine revs to build up again to normal working speed. Follow the procedure detailed above in “Normal Forward Speed”. Expected forward speed will be much lower in heavy conditions.

**FAILURE TO DO THIS WILL RESULT IN CLUTCH SLIP AND ULTIMATELY SEVERE DAMAGE TO THE CLUTCH AND DRIVE BELTS.**

## 5.6 STOPPING THE MOWER

When stopping the mower after a period of heavy use. Run the machine at half working speed in a stationary position, for at least 4 minutes, to allow the drive belts to cool down.

1. Show caution to hot parts e.g. engine exhaust, belts etc after engine is switched off.
2. When the mower has cooled down (Min 1hr after last used) Ensure all grass has been removed from engine cooling fins, drive belt area, and rotors before operating again.
3. Please push Stop Button if there is any emergency situation



## 5.7 TRANSPORT POSITION

When the mower is being moved from one site to another it is advisable to raise the deck to the highest position (Transport position, See section 5.3 “Mower cutting height”)

The engine must be stopped and the blades at a standstill before adjusting to the transport position.

Remove any crop debris from the deck before leaving the field.

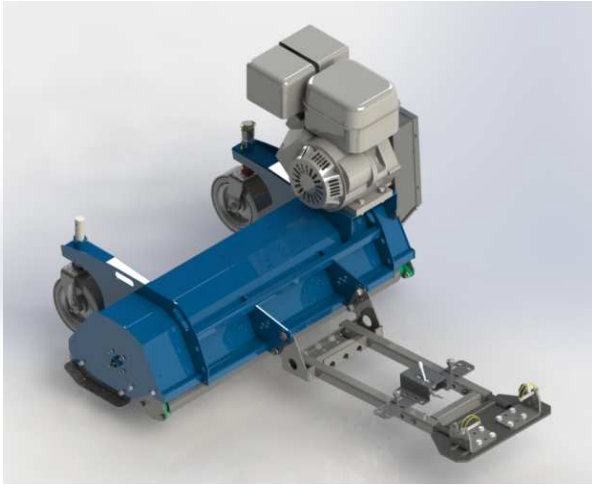
Never move from one site to another with the engine running.

Please note the FAM – Flail Mower is not road legal, and should not be used on public

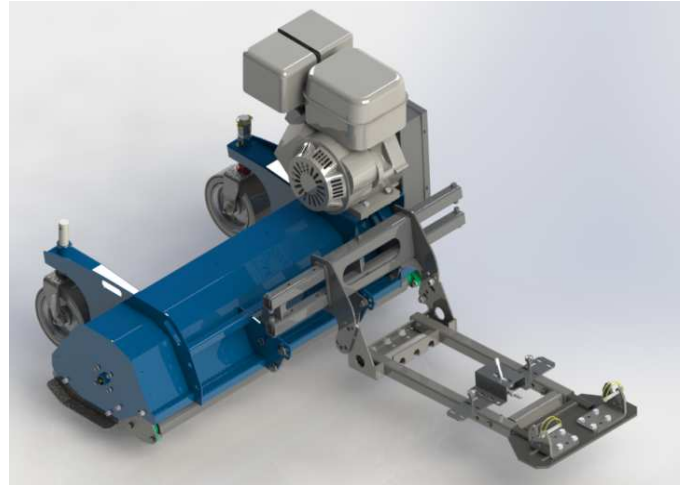


## 5.8 Sideshift Kit

FAM mower has two postions, with or without side shift kit

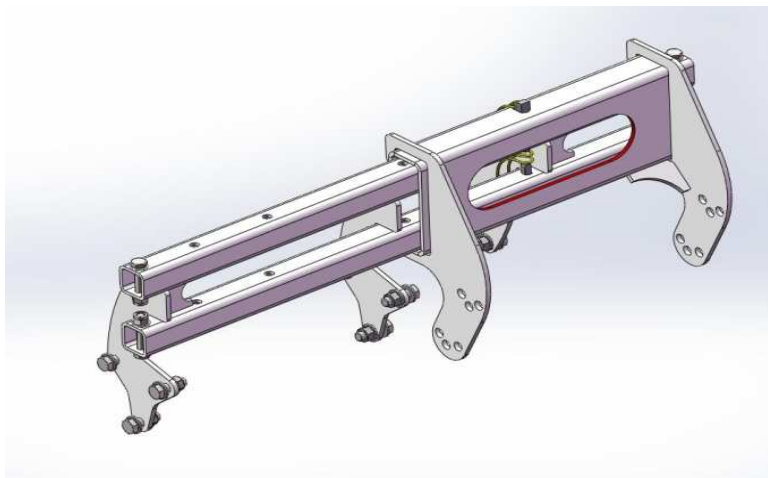


without side shift kit



with side shift kit

If the mower is fitted with a sideshift kit (optional), the cutter can be moved 37 cm to the left during operation.



sideshift kit



# 6

## MAINTENANCE

Maintenance Schedule				
Maintenance Operation:	Hourly	Daily	Weekly	Seasonal
Engine (See Engine manufacturers manual)	●	●	●	●
Remove excess crop gathered on deck	●	●	●	●
Remove excess crop wrapped around rotor ends	●	●	●	●
Visual check to ensure nothings loose		●	●	●
Grease Height Adjuster		●	●	●
Grease Rear Roller		●	●	●
Grease Rotor Bearings		●	●	●
Tyre Pressures			●	●
Drive belt inspection			●	●
Rotor Bearing inspection			●	●
Wheel bearing inspection			●	●
Oil 50mm coupling			●	●
Swivel hitch Bush Wear			●	●
Check All Fastener's are tight and intact			●	●
Safety Chain Guard inspection			●	●
Safety Decals intact			●	●
Safety Guards Intact			●	●
Check Blade wear / condition				●
Check Metal Fatigue				●
Clutch Wear / Function				●

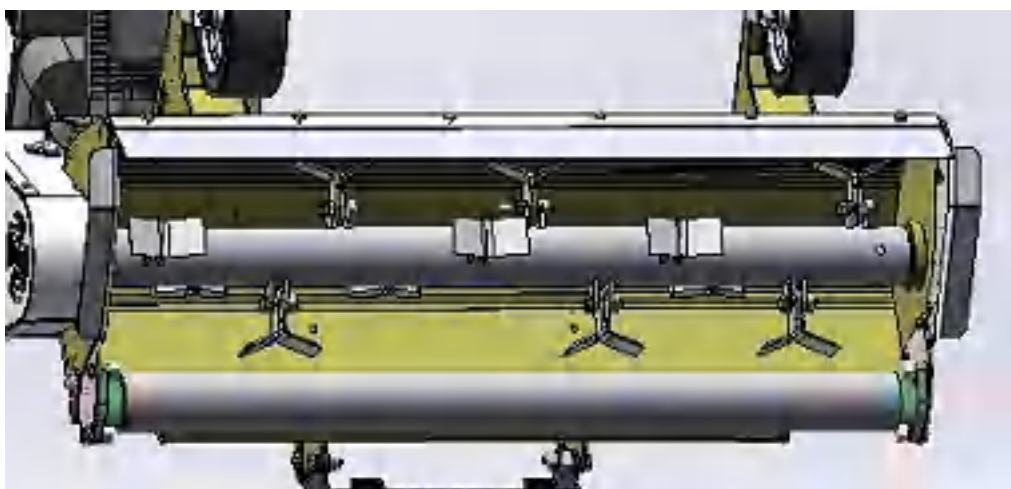
### 6.1 ENGINE

Refer to engine manufacturers manual, for servicing and maintenance of the engine.

### 6.2 EXCESS CROP BUILD UP

Remove all crop deposits from the deck, and engine area. Build up of crop deposits could result in heat build and fires

Disconnect the spark plug lead.



### **6.3 VISUAL CHECK**

Make a visual check around the mower, check for missing / loose parts or damaged / worn components. All-faults must be either repaired or replaced.

### **6.4 TYRE CHACE**

Check tyres regularly for damage and wear

### **6.5 ROTOR BEARING INSPECTION**

Rotate rotor shaft by hand and feel for any roughness in the bearings. Also try to pull the shaft from side to side to see if any movement is found. If symptoms persist strip down the rotor-housing unit and inspect bearings.

### **6.6 WHEEL BEARING INSPECTION**

Jack one side of the mower body up, so the wheel is just off the ground. Rotate the wheel by hand, and check the wheel alignment. To check the bearing, try to move the wheel from left to right and feel for any play in the bearings (A), ensure the wheel-locating bolt is tight before you start and follow any jacking procedures. If any play is found remove the wheel and inspect bearings. Replace any faulty bearings.



### **6.7 OIL 50mm COUPLING/BUSH WEAR**

Check coupling for signs of damage or wear, swivel the coupling 36. degrees and check that the bushes are not too worn. Replace any worn or damaged parts.

Oil the coupling regularly as shown below.

### **6.8 GENERAL INSPECTION**

Check the mower to ensure all fasteners are tight and all safety guards / chains are intact and fitted securely. Check all safety-warning decals, Replace any defective guards or damaged decals.

## **6.9 ROTOR FLAIL MAINTENANCE**

The FAM range has “Rock” knives designed to last a long time. The standard knives are double edged for even longer life. However, when breaking or losing a knife, it is important to replace it immediately. Failure to do this can cause serious unbalancing problems. (Always use spare parts)

At the time of replacement, the opposite knife on the rotor should be checked for wear. If it is partially or well worn then it should be changed to maintain an accurate weight balance.

When the first cutting edge is becoming blunt, the whole set of flails should be turned around. (Using blunt knives will reduce the cutting efficiency and increase fuel consumption).

Replacing or reversing the knives follows this simple procedure:

- (A) Ensure mower engine has stopped and the knives have stopped rotating. Switch off the fuel tap and let the machine cool down for 5 minutes. Remove the spark plug to ensure the engine cannot be started.
- (B) Raise the mower to its max cutting height.
- (C) Carefully raise the drawbar to an incline position, so that height adjuster bar at the rear of the mower takes the weight. NB; Do not attempt this with the wheels behind version; raise the front jack to its max height.
- (D) Slacken and take out the shackle bolt.
- (E) Replace or turn around blades (Note the direction of rotation)
- (F) Replace shackle bolt securely, but still allowing the shackle to swing on the fixing bush.

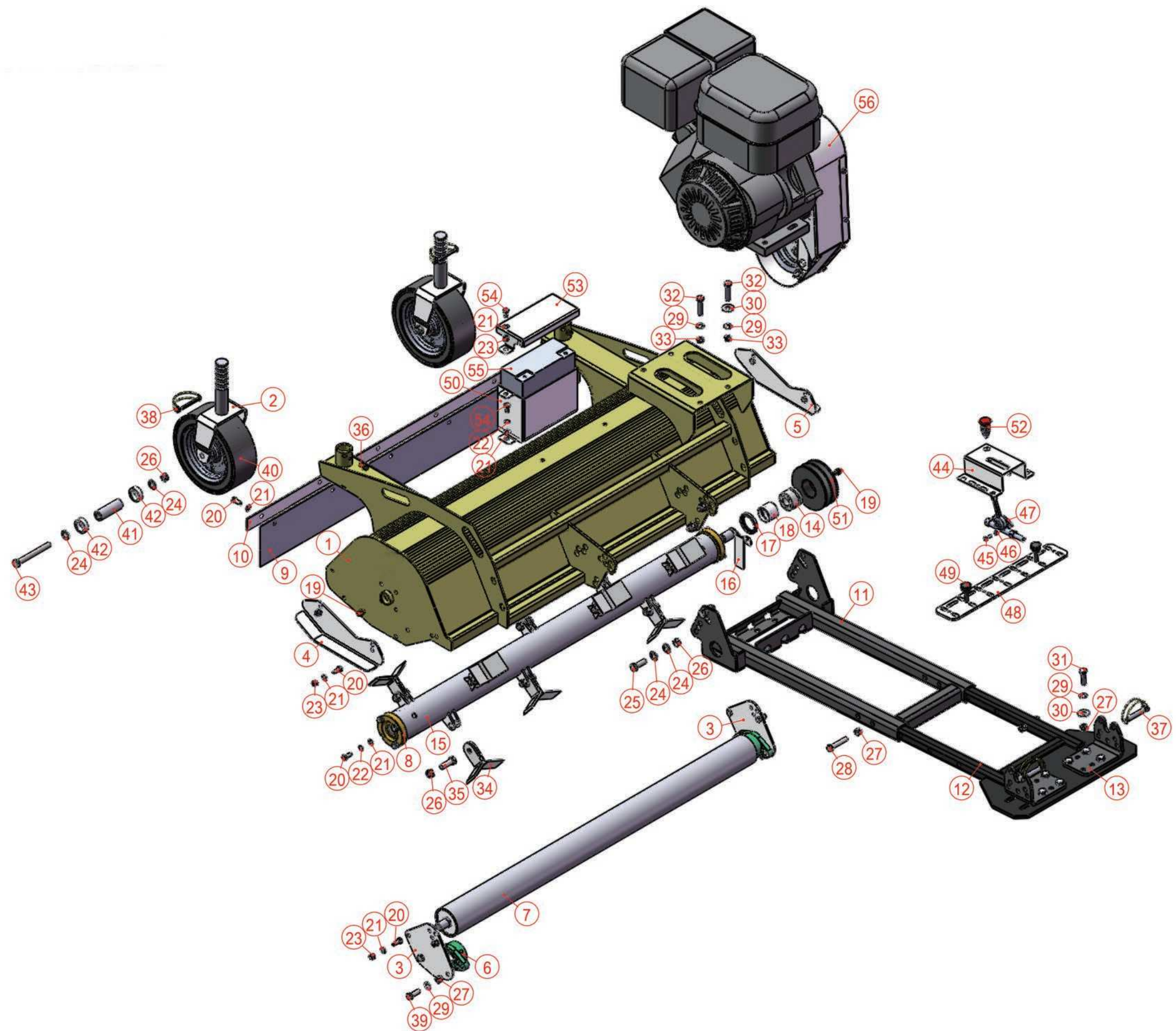
### **NOTE:**

Never use cracked or repaired shackles when replacing knives. If the shackle fixing has become damaged or worn, replace with new parts



For repairs beyond the minor adjustments listed above, contact your local dealer or contact.

# FAM Flail Mower Part List

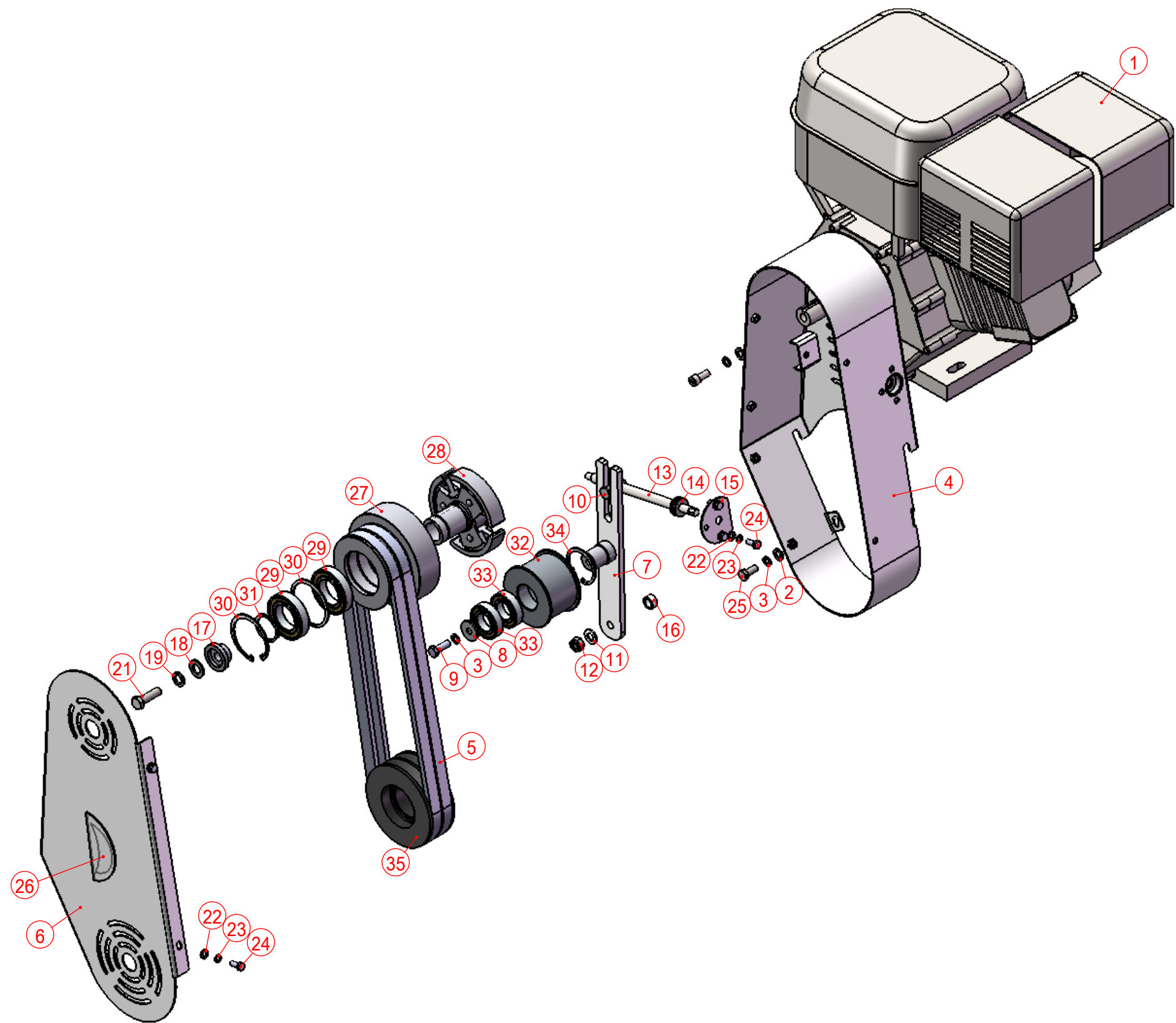


**FAM100 Spare Parts List**  
**FAM100.01**

No.	Item No.	Name	Qty	Remark
1	FAM100.010	hood weldment	1	
2	FAM100.011	axle weldment	2	
3	FAM100.101	mounting plate	2	
4	FAM100.102	sliding plate	1	
5	FAM100.103	sliding plate (right)	1	
6	GB/T 7810-1995	bearing seat UCFLU204	2	UCFLU204
7	FAM100.016	roller	1	
8	bearing seat	UC205	2	
9	FAM100.116	rubber plate	1	
10	FAM100.117	rubber platen	1	
11	FAM100.012	adapting piece	1	
12	FAM100.013	expansion bracket	1	
13	FAM100.121	frame joint	2	
14	sleeve	22x47x34	1	22x47x34
15	FAM100.018	blade shaft	1	
16	FAM100.015	damper	1	
17	GB/T 13871.1-2007	lip type sealing ring	1	55x40x8
18	FAM100.110	oil seal sleeve	1	
19	nipple	M8-1	2	
20	GB/T 5783-2000	hexagon head bolt	22	M8×20
21	GB/T 95-2002	plain washer 8	24	8
22	GB/T 859-1987	spring washer 8	10	8
23	GB/T 889.1-2000	hexagon lock nut M8	10	M8
24	GB/T 95-2002	plain washer C level 12	12	12
25	GB/T 5783-2000	hexagon bolt M12*35	4	M12×35
26	GB/T 889.1-2000	hexagon lock nut M12	18	M12
27	GB/T 889.1-2000	hexagon lock nut	14	M10
28	GB/T 5780-2000	hexagon bolt C level	2	M10×55

29	GB/T 95-2002	plain washer C level 10	16	10
30	GB/T 96.2-2002	big washer C level 10	10	10
31	GB/T 5783-2000	hexagon head bolt	8	M10×35
32	GB/T 5783-2000	hexagon head bolt	4	M10×45
33	GB / T6182-2000	hexagon lock nut M10	4	M10
34		Y blade	24	
35	GB/T 5783-2000	hexagon head bolt	12	M12×35
36		nipple	6	M6
37		hold pin	2	10X60
38		hold pin	2	6X70
39	GB/T 5783-2000	hexagon head bolt	4	M10×30
40	FM180.105	tire components	2	
41	FM180.104	axle	2	
42	FAM100.122	spacer	4	
43	GB/T 5782-2000	hexagon head bolt	2	M12×110
44	FAM100.021	mounting seat for accelerator	1	
45	GB/T 5783-2000	hexagon head bolt	2	M6×16
46	GB / T6182-2000	hexagon lock nut M6	2	
47		accelerator cable assembly	1	1.4米
48	FAM100.120	mounting seat	1	
49	bakelite bolt	M8-33	2	
50	FAM100.023	battery box	1	
51	ATV120.108	driven pulley	1	
52		scram button	1	φ16
54	GB/T 5783-2000	hexagon head bolt	4	M8×16
56	FAM100.02	transmission system	1	

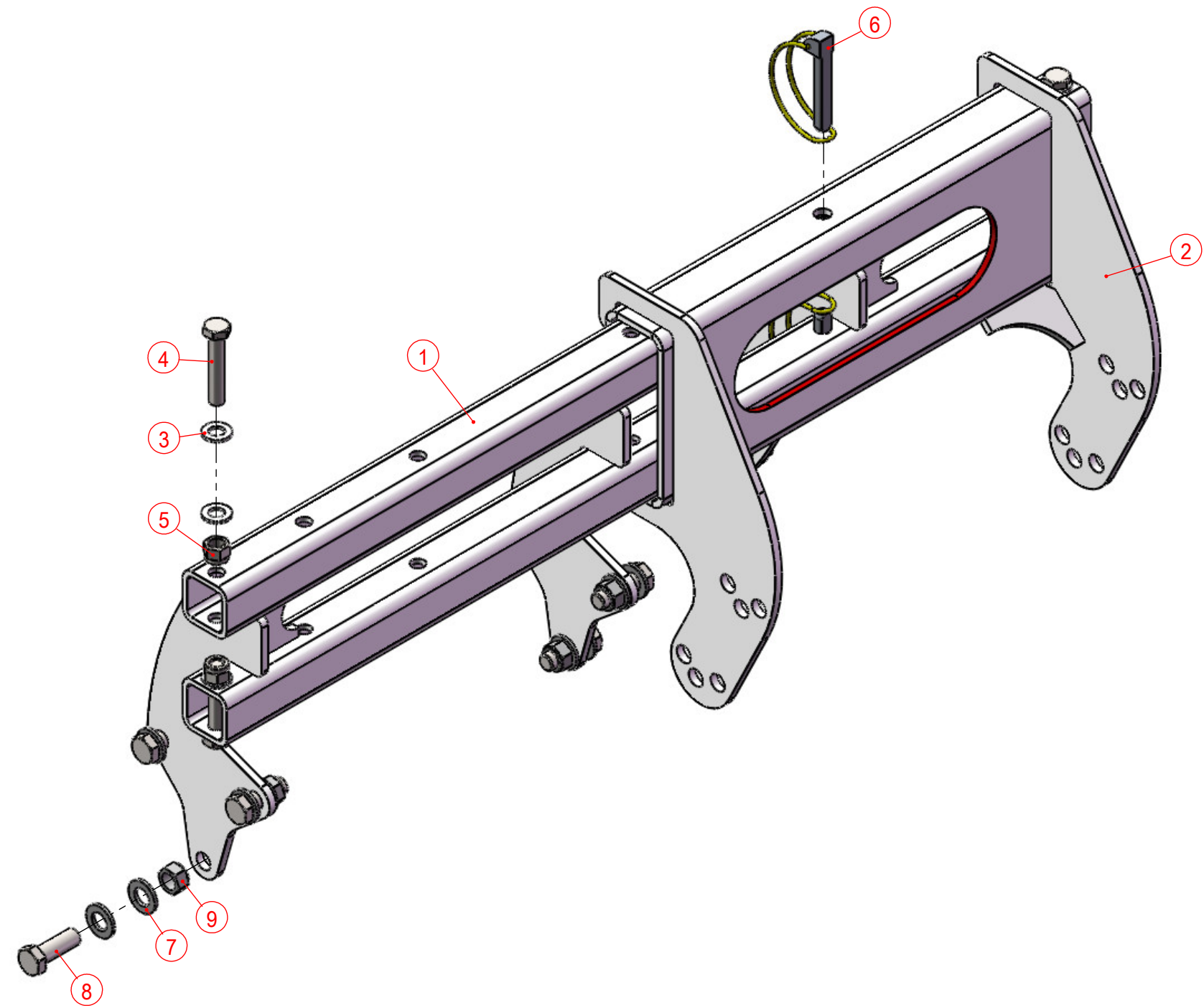






FAM100.02				
No.	Item No.	Name	Qty	Remark
1	engine	15HP	1	
2	GB/T 95-2002	plain washer M8	6	8
3	GB/T 859-1987	spring washer M8	7	8
4	FAM100.022	pulley cover weldment	1	
5	BX38	belt	2	
6	FAM100.123	pulley cover	1	
7	FAM100.024	tension plate	1	
8	GB/T 5287-2002	plain washer M8	1	9*28*3
9	GB/T 5781-2000	hexagon bolt	1	M8×25
10	AT120.134	adjustment nut	1	
11	GB/T 95-2002	plain washer M10	1	10
12	GB/T 889.2-2000	hexagon lock nut M10	1	M10
13	ATV120.131	adjustment lever	1	
14	GB/T 301-1995	thrust ball bearing	1	51100
15	ATV120B.108	plate	1	
16	FAM100.124	spacer	1	
17	AT120.110	dead plate for pulley	1	
18	GB/T 95-2002	plain washer M12	1	12
19	GB/T 859-1987	spring washer M12	1	12
20	GB/T 70.2-2000	hexagon socket cap screws	4	5/16-24x20
21	GB/T 5783-2000	hexagon bolt	1	7/16-20X35
22	GB/T 95-2002	plain washer M6	9	6
23	GB/T 859-1987	spring washer M6	9	6
24	GB/T 5783-2000	hexagon bolt	9	M6×16
25	GB/T 5783-2000	hexagon bolt	2	M8×20
26	FAM100.125	organic glass	1	
27	ATV120.109	driving wheel	1	
28	HZR9	clutch	1	

29	GB/T 276-94	deep groove ball bearing	2	6007-2Z
30	GB 893.1-86	circlip for hole A type	2	62
31	GB 894.2-86	circlip for shaft B type	1	35
32	AT120.111	tensioning wheel	1	
33	GB/T 276-94	deep groove ball bearing	2	6005-2Z
34	GB 893.1-86	circlip for hole A type	1	47
35	ATV120.108	driven wheel	1	



FAM100.03				
No.	Item No.	Name	Qty.	Remark
1	FAM100.019	side shift front mounting weldment	1	
2	FAM100.020	side shift rear mounting weldment	1	
3	GB/T 95-2002	plain washer 10	8	10
4	GB/T 5780-2000	hexagon bolt	4	M10×55
5	GB/T 889.1-2000	hexagon lock nut M10	4	M10
6		hold pin 10×60	2	10×60
7	GB/T 95-2002	plain washer 12	16	12
8	GB/T 5783-2000	hexagon bolt	8	M12×35
9	GB/T 889.1-2000	hexagon lock nut M12	8	M12